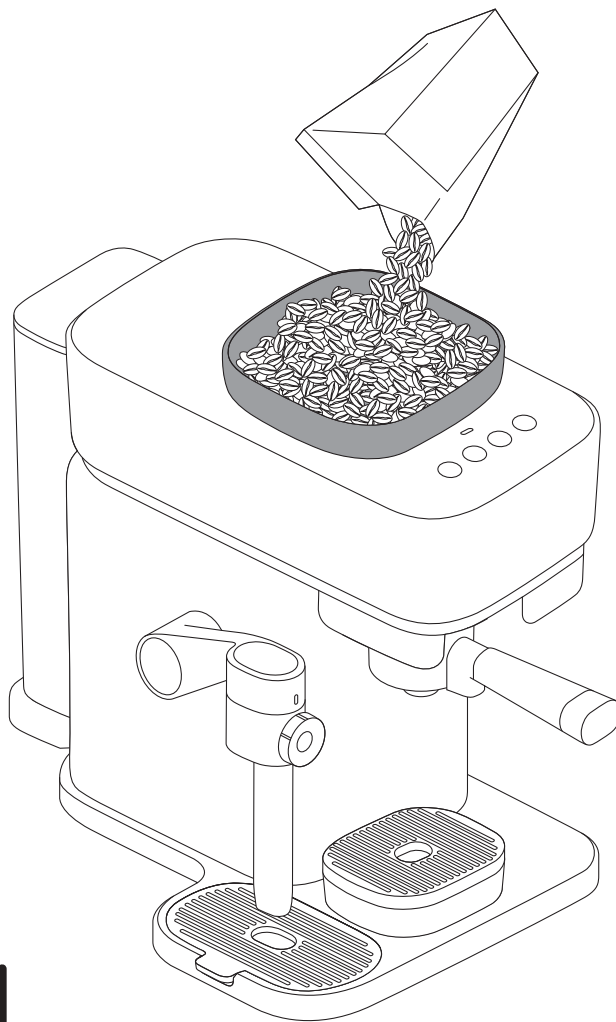
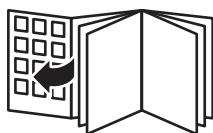


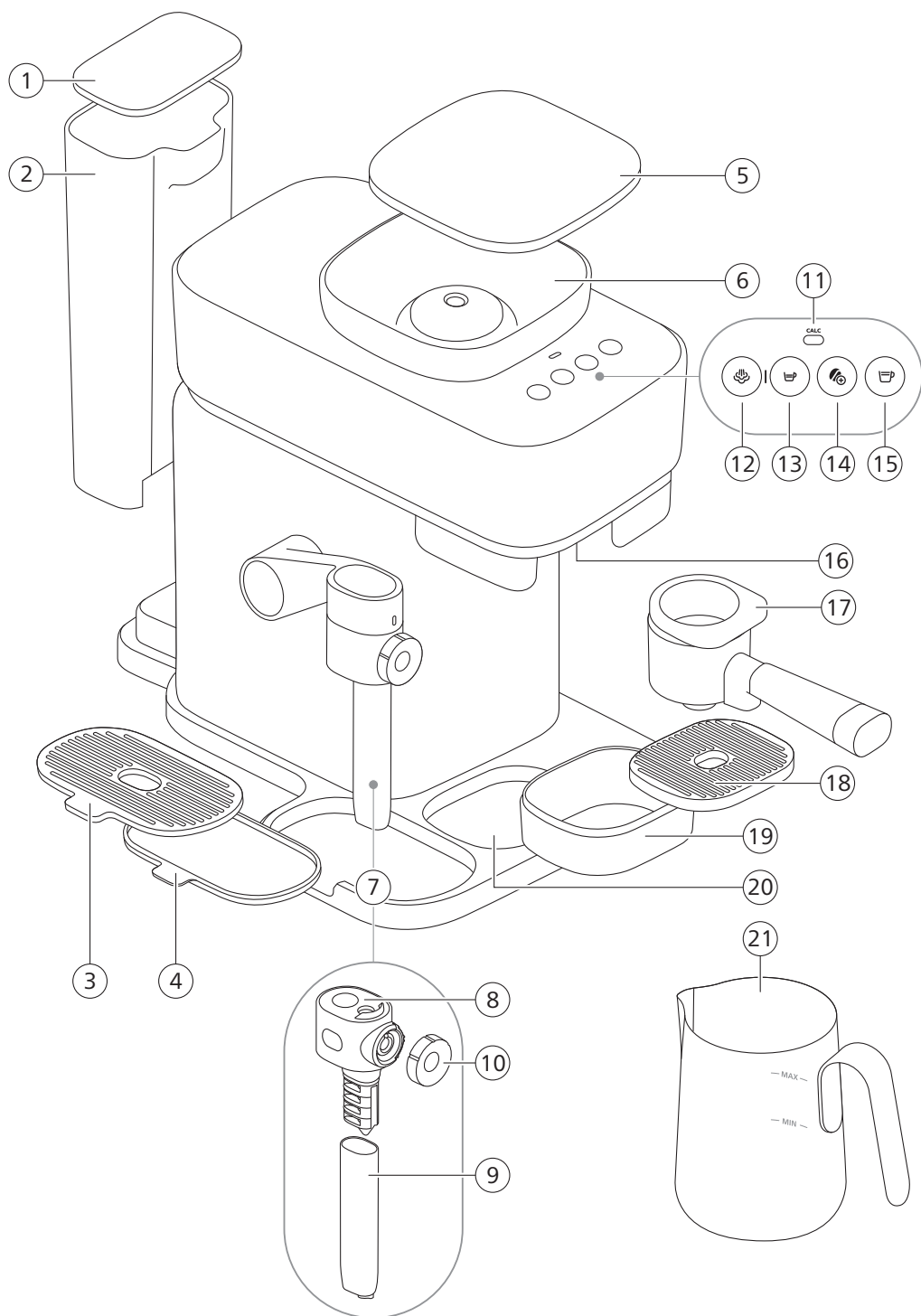
**PHILIPS**

# **baristina**

BAR400, BAR401









## English 6

## Contents

<b>Coffee machine overview</b>	6
<b>Introduction and features</b>	7
Direct start	7
Intensity boost button	7
Frothing milk and brewing coffee in one go function	8
Smart foam wand	8
Ejection button on the portafilter	8
Using larger cups	9
Programming drink volumes	9
<b>Preparing for use</b>	9
<b>Brewing Espresso or Lungo</b>	12
Standard drink volumes	12
Intensity boost function	12
Preparing coffee	12
Brewing decaf coffee	15
<b>Frothing or heating-up milk with the smart foam wand</b>	15
<b>Frothing milk and brewing coffee in one go</b>	17
<b>Programming drink volumes</b>	19
To program the coffee volume:	20
Resetting the drink volumes to factory settings	21
<b>Cleaning and maintenance</b>	21
Rinsing the machine	21
Cleaning the smart foam wand after every use	22
Rinsing the portafilter	23
Cleaning detachable parts and jug	24
Cleaning the bean container and outside of the machine	24
<b>Descaling</b>	25
Descaling procedure	25
<b>Meaning of light signals</b>	27
<b>Troubleshooting</b>	31
Troubleshooting milk froth	33
<b>Recipes</b>	34

## Coffee machine overview

- 1 Water tank lid
- 2 Water tank
- 3 Milk drip tray cover
- 4 Milk drip tray
- 5 Bean container lid
- 6 Bean container
- 7 Smart foam wand
- 8 Top wand part
- 9 Metal wand tube

- 10 Foam selector knob
- 11 Calc led
- 12 Foam button
- 13 Espresso button
- 14 Intensity boost button
- 15 Lungo button
- 16 Portafilter holder
- 17 Portafilter
- 18 Drip tray cover
- 19 Drip tray
- 20 Lower drip tray
- 21 Jug

## Introduction and features

Congratulations with your new Philips Baristina Latte machine. This machine is super simple to use and maintain. Pour in your favorite beans, swipe that handle, froth your milk the way you like it and enjoy your café favorite.

**Important:** This machine has been tested with coffee. Although it has been carefully cleaned, there may be some coffee residues left. We guarantee, however, that the machine is absolutely new.

### Some features of the machine:

#### Direct start



The direct start function allows you to switch on your machine and brew delicious coffee easily or start frothing. There is no on/off button. Simply press the button of the drink you want to brew and move the portafilter to the right to start grinding and brewing. After pressing the Foam button, the machine will heat up and start steaming automatically.

#### Intensity boost button



The Intensity boost function allows you to brew a more intense Espresso or Lungo. Press the button to switch the Intensity boost on. Press it again to switch it off.

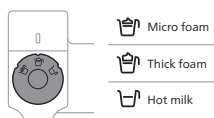
## Frothing milk and brewing coffee in one go function

You can select the Foam button and drink button at the same time. When the first selected action is finished, the second one will automatically start (see 'Frothing milk and brewing coffee in one go').

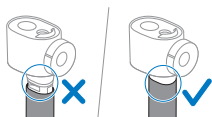
## Smart foam wand



With one touch, frothing happens automatically. The Foam button will blink slowly for about 30 seconds, indicating the machine is heating up to start steaming.



With our smart foam wand, Baristina froths precisely and stops automatically until the perfect result is reached. You can select delicately crafted micro-foam, a lusciously thick and silky froth, or simply hot milk with the foam selector knob. After frothing, simply detach the two parts and rinse under the tap to clean, or clean the parts in the dishwasher.



- Attach the foam selector knob and make sure the metal wand tube is fully connected to the top wand part.

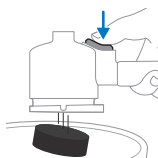


- To attach the smart foam wand onto the machine, push it upwards until it "clicks" into position.



- For easy removal, rotate the top wand part to the left (1) and slightly pull it down (2).

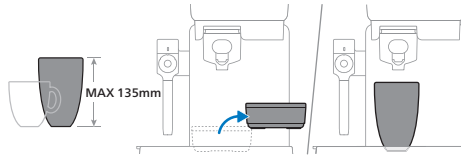
## Ejection button on the portafilter



With this ejection button it is very easy to remove the coffee puck after each coffee brew. Remove the coffee puck by holding the portafilter upside down and pressing the ejection button.



## Using larger cups



You can remove the drip tray under the coffee spout to create extra space to place taller cups or glasses. If the drip tray is removed, you can place a cup with a height of up to 135 mm.

## Programming drink volumes

This coffee machine offers two standard drink recipes. The volumes can be adjusted and programmed (see 'Programming drink volumes').

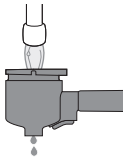
## Preparing for use

During first use, it is recommended for the machine to brew a couple of cups before the coffee is at the right quality.

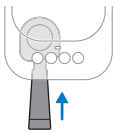
Before first use, remove all packaging materials from the machine and unpack the accessory box.

When you use the machine for the first time or if you have not used it for 1 week or longer, perform the following steps:

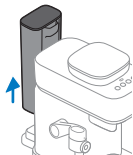
- 1 Rinse the portafilter under the tap and dry the outside of the portafilter with a cloth.



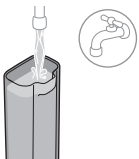
- 2 Insert the portafilter into the machine until it "clicks" into position.



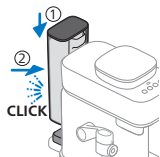
- 3 Remove the water tank from the machine.



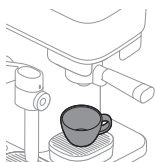
## 10 English



**4** Rinse the water tank and fill it with fresh water.



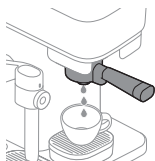
**5** Place it back in the machine and push it forward to "click" it into position.



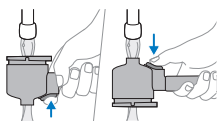
**6** Place a large cup or coffee mug with a volume of at least 150 ml under the coffee spout.



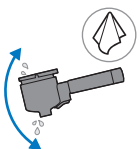
**7** Press and hold the Intensity boost button for 5 seconds until the button starts blinking slowly.



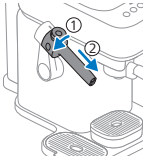
**8** The machine heats up and starts rinsing water from the coffee spout into the cup. The Intensity boost button will continue to blink slowly during this process.



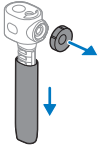
**9** When the Intensity boost button stops blinking, the machine is done rinsing. Remove the portafilter and rinse it under the tap with fresh, lukewarm water. Rinse the portafilter thoroughly from both sides while pressing the ejection button several times.



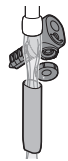
**10** Shake off excessive water from the portafilter and dry the portafilter with a cloth. The machine is now ready for use.



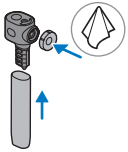
- 11** For easy removal, rotate the top wand part to the left (1) and slightly pull it down (2).



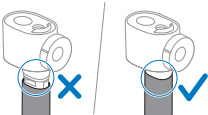
- 12** Remove the foam selector knob and detach the metal wand tube by pulling it down from the top wand part.



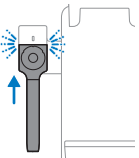
- 13** Rinse all parts under the tap and clean with a soft sponge and some mild, odorless washing-up liquid.



- 14** Dry and reassemble all parts.



- 15** Make sure the metal wand tube is fully attached onto the end of the top wand part, which is important for a good milk froth.



- 16** Attach the smart foam wand onto the machine by pushing it upwards until it "clicks" into position.



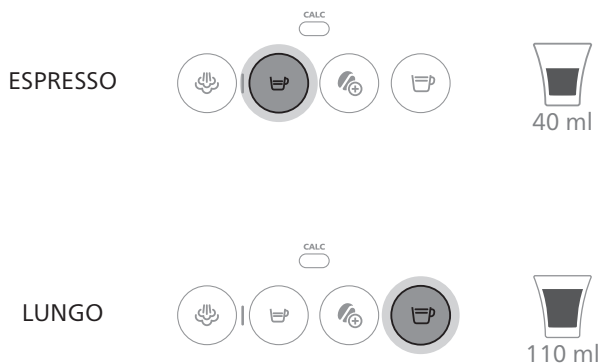
- 17** Rinse the jug under the tap and clean with a soft sponge and some mild, odorless washing-up liquid.

The jug is dishwasher safe.

## Brewing Espresso or Lungo

### Standard drink volumes

This coffee machine offers two standard drink recipes. The volumes can be adjusted and programmed (see 'Programming drink volumes').



### Intensity boost function



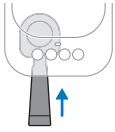
This machine comes with Intensity boost function. This allows you to brew a more intense Espresso or Lungo by grinding more coffee. To use the Intensity boost function, press the Espresso or Lungo button and press the Intensity boost button to switch this function on. As long as the Intensity boost function is enabled, the Intensity boost button is on continuously. When you press it again, the Intensity boost function will be disabled.

### Preparing coffee



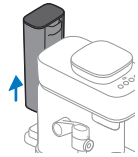
- 1 Remove the lid of the bean container and fill it with coffee beans.

**Do not use caramelized or flavored coffee beans.**

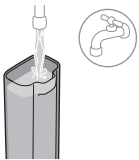


- 2** Insert the empty and clean portafilter into the machine until it "clicks" into place.

Make sure the portafilter is empty.



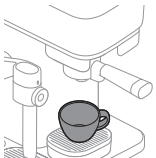
- 3** Remove the water tank from the machine.



- 4** Fill it with fresh water.

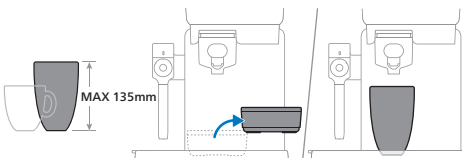


- 5** Place it back in the machine and push it forward to "click" it into position.



- 6** Place a cup under the coffee spout that can hold the amount of coffee you prefer.

Make sure the cup is correctly placed under the spout of the portafilter.



You can place a cup with a height of up to 95 mm when the drip tray is placed. You can remove the drip tray to create extra space to place taller cups or glasses. If the drip tray is removed, you can place a cup with a height of up to 135 mm.

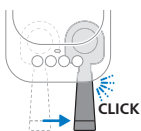


- 7** Press the Espresso or Lungo button to select the drink you want to brew. The selected button will start blinking slowly.

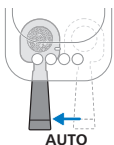


- 8** To brew a more intense Espresso or Lungo, select the Intensity boost button after selecting your drink. The Intensity boost button will light up. To disable the Intensity boost function, press the button again.

The Intensity boost button can only be used if a drink button is selected first.



- 9** Move the handle to the right until you hear a “click”. The machine will start to grind the coffee beans. While grinding, the selected drink button keeps blinking slowly.



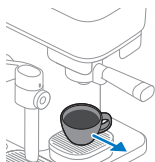
- 10** When the machine is done grinding the coffee beans, the portafilter automatically moves back into starting position.



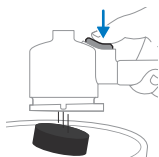
- 11** The machine starts to brew the selected beverage. The selected drink button will keep blinking slowly.

If you want to stop brewing the coffee, press the blinking slow button. The machine will stop dispensing coffee.

If the drink button starts blinking fast and stops brewing, the water container is empty. Refill the water container and press the blinking fast button to finish the drink.



- 12** When the drink button stops blinking and all buttons are off, your coffee is ready. Enjoy your Espresso or Lungo brewed from freshly ground coffee beans.



- 13** When all buttons are off, remove the portafilter from the machine. Invert the portafilter over a bin and press the ejection button to remove the coffee puck from the portafilter.

Empty the portafilter after every coffee brew.

## Brewing decaf coffee

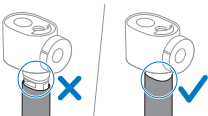
The machine also provides an option to brew decaf coffee using pre-ground coffee powder.

- 1 Add decaffeinated ground coffee (max. 10 g or one full tablespoon) to the portafilter.
- 2 Insert the portafilter into the machine.
- 3 Make sure the water container is filled with water.
- 4 Place a cup under the coffee spout.
- 5 Press and hold the Intensity boost button for 5 seconds until the button starts blinking slowly.
- 6 The machine heats up and starts dispensing water through the portafilter to brew your decaffeinated coffee. The button is blinking slowly.
- 7 Press the Intensity boost button again when you have reached the volume of coffee you want. Your decaf coffee is now ready.

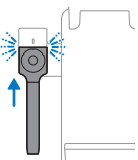
## Frothing or heating-up milk with the smart foam wand



There are three settings for milk foam: micro foam, thick foam and no foam just hot milk. You can use cow milk and plant based milk such as soy, almond, oat, pea milk. Use the supplied jug and fill it up between the min and max volume indication inside of the jug.



Attach the foam selector knob and make sure the metal wand tube is fully attached onto the top wand part.



- 1 Attach the smart foam wand onto the machine by pushing it upwards until it "clicks" into position.

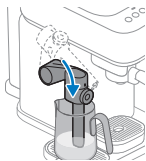


- 2 Fill the jug with cold milk between the min and max indications, which are on the inside of the jug.

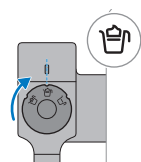
Always use cold (directly from the fridge) cow or plant-based milk for the best froth result.



- 3 Move the smart foam wand upwards.



- 4 Place the jug and lower the smart foam wand into the milk-filled jug. Make sure the metal wand tube is inserted into the milk.

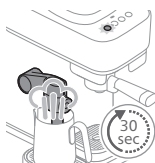


- 5 Rotate the foam selector knob to the left or the right and select the preferred froth setting.

The most left setting is micro foam, the middle setting is thick foam and the most right setting is hot milk.



- 6 Press the Foam button. The Foam button will start to blink slowly for approx 30 seconds, indicating the machine is heating up to start steaming.



- 7 After approx 30 seconds, the machine will start frothing the milk and the Foam button continues to blink slowly. The machine will automatically stop steaming when the correct milk froth result and temperature is reached. The Foam button will switch off when ready.

You can stop steaming by pressing the blinking slow Foam button.



- 8 When the Foam button is switched off, pull the jug a bit forward by the handle of the jug and lift the smart foam wand upwards.

**After steaming, the metal wand tube is warm.**



- 9 Remove the jug by grabbing the handle.

**After steaming, the jug is warm.**





**10** Push down the smart foam wand to the lower position.

**After steaming, the metal wand tube is warm.**



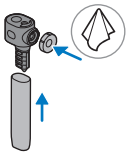
**11** Swirl the jug with the milk froth a few times.



**12** Pour the milk froth into a cup with espresso and you have a delicious cappuccino or milk-based drink of your own choice.



**13** For easy removal, rotate the top wand part to the left (1) and slightly pull it down (2).



**14** Clean and dry all parts and jug after use (see 'Cleaning the smart foam wand after every use').

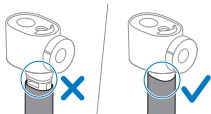
## Frothing milk and brewing coffee in one go

The Baristina Latte offers you to froth milk and brew coffee in just one go. While frothing milk, you can preset to brew the coffee. Make sure the water container and bean container are filled before you start the process, and the portafilter is empty. While brewing coffee, you can also preset to froth milk.



**1** To start preparing milk froth in the jug, add milk into the jug between the min and max level. Lift up the smart foam wand and place the jug with milk. Lower the smart foam wand, ensuring the metal wand tube is inserted into the milk-filled jug.

Always use cold (directly from the fridge) cow or plant-based milk for the best froth result.



Always make sure the metal wand tube is fully attached to the top wand part.



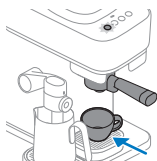
- 2 Select the preferred froth setting.

The most left setting is micro foam, the middle setting is thick foam and the most right setting is hot milk.



- 3 Press the Foam button to start steaming. The Foam button starts blinking slowly.

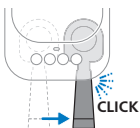
It takes about 30 seconds for the machine to heat up and it will start automatically frothing the milk. During the heating-up, the Foam button keeps blinking slowly.



- 4 While the machine is steaming the milk, you can preset to brew coffee. Insert the empty portafilter and place a coffee cup under the coffee spout.



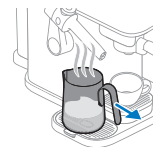
- 5 Select the drink you want to preset, including boost if preferred. The selected drink button and the Foam button are blinking slowly at the same time.



- 6 Move the handle to the right until you hear a "click". The Foam and drink buttons will continue to blink slowly.

- 7 When milk frothing is finished, the Foam button goes off. The machine will automatically grind the beans and brew the coffee as you preset. The drink button keeps blinking slowly.

When pressing any of the blinking buttons, the complete process is stopped.



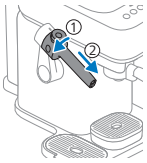
- 8 While the machine is brewing coffee, remove the jug with milk froth from the machine.



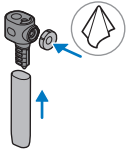
**9** Swirl the jug with the milk froth a few times.



**10** When the coffee is brewed, remove the cup and pour the milk froth onto the espresso for a delicious cappuccino or other milk-based drink.



**11** For easy removal, rotate the top wand part to the left (1) and slightly pull it down (2).



**12** Clean and dry all parts and jug after use (see 'Cleaning the smart foam wand after every use').

## Programming drink volumes

Each coffee button is programmed to brew coffee at its ideal setting. Nevertheless, you can adapt the volume of the drink buttons to your wishes and save your preference in the machine. The machine then brews your preferred amount of coffee every time.

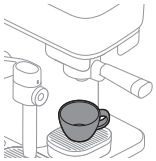
Only the volume of the drink buttons can be programmed. The Intensity boost button and the Foam button cannot be programmed and/or selected during programming mode.

	   	Min.	Max.
Espresso	   	30 ml	70 ml
Lungo	   	70 ml	200 ml

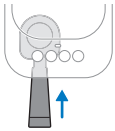
## To program the coffee volume:



- 1 Fill the water container with fresh water.



- 2 Place a cup on the drip tray.



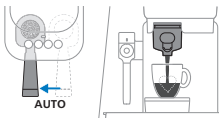
- 3 Insert the portafilter into the machine until it "clicks" into place.



- 4 Press and hold the button of the recipe you want to change for 5 seconds, until the button starts blinking intermittently.



- 5 Move the handle to the right until you hear a "click". The machine will start to grind the coffee beans for the selected beverage into the portafilter.



- 6 The portafilter automatically moves back into position and the machine starts to brew the selected beverage.



- 7 When the cup contains the desired quantity of coffee, press the blinking button (the button you are programming) again. The selected button will blink in a short burst to confirm that the new volume has been programmed.



- 8** The machine is ready when the button goes off. Remove the cup and enjoy your coffee with the adjusted volume.

## Resetting the drink volumes to factory settings



Press and hold the Espresso, Lungo and Intensity boost buttons simultaneously for 5 seconds until all buttons start to blink fast to show that the machine has been reset to factory settings.

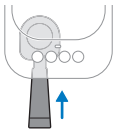
## Cleaning and maintenance

### Rinsing the machine

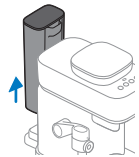
Rinse the machine and accessories before first use or when it has not been used for one week or longer.

To rinse the machine, the portafilter needs to be empty and inserted into the machine. To start rinsing, press and hold the Intensity boost button for 5 seconds until the Intensity boost button starts blinking intermittently.

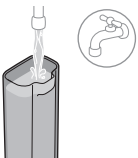
- 1** Insert the portafilter into the machine until it "clicks" into place.

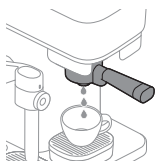
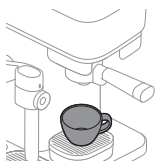


- 2** Remove the water tank from the machine.



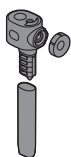
- 3** Rinse the water tank and fill it with fresh water.





- 4 Place it back in the machine and push it forward to "click" it into position.
- 5 Place a large cup or coffee mug with a volume of at least 150 ml under the coffee spout.
- 6 Press and hold the Intensity boost button for 5 seconds until the button starts blinking slowly.
- 7 The machine heats up and starts rinsing water from the coffee spout into the cup. The Intensity boost button will continue to blink slowly during this process.
- 8 When the Intensity boost button stops blinking, the machine is done rinsing.

## Cleaning the smart foam wand after every use

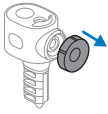


To ensure good and consistent milk froth quality, all 3 parts need to be detached, properly rinsed and dried after use.

Clean the smart foam wand for hygiene reasons and to avoid the build-up of milk residues.



- 1 For easy removal, rotate the top wand part to the left (1) and slightly pull it down (2).
- 2 Detach the metal wand tube by pulling it down from the top wand part.

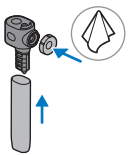


- 3 Detach the foam selector knob by pulling it forward.



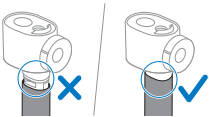
- 4 Clean all parts with some mild washing-up liquid and a soft sponge under running water to remove any milk residue.

The parts are dishwasher safe.



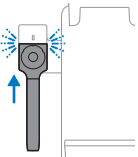
- 5 Dry all parts with a drying cloth and attach them back together.

Make sure these parts are completely dry as moist in it can impact the frothing quality.



- 6 Attach the foam selector knob and make sure the metal wand tube is fully attached until the end of the top wand part.

If the parts are not fully attached, this can impact the frothing quality.

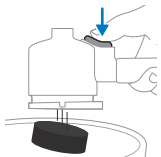


- 7 Attach the smart foam wand onto the machine by pushing it upwards until it "clicks" into position.

## Rinsing the portafilter

Clean the portafilter between drinks or at the end of the day which is preferred.

The portafilter cannot be cleaned in the dishwasher as this will cause decoloring and damage to the materials.

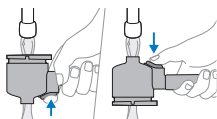


- 1 Empty the portafilter.



- 2 Rinse the portafilter with hot water under the tap. You can use some mild odorless detergent and a soft sponge.

**Do not use any sharp objects to empty or clean the portafilter, as this may damage the sealing surfaces.**



- 3 While rinsing, turn the portafilter to rinse it from all sides and press the ejector button several times.



- 4 Shake off excessive water from the portafilter and dry the inside and outside with a cloth.



To thoroughly clean the portafilter head, soak it in warm water and some mild washing-up liquid for approximately 10 minutes. Then rinse it under the tap according to the instructions above.

If you have a portafilter with a wooden handle, make sure not to soak the handle in the water.

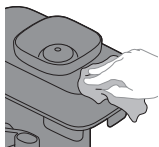
## Cleaning detachable parts and jug



Detachable parts include: water tank lid and water tank, milk drip tray cover and milk drip tray, drip tray cover and drip tray, bean container lid and jug.

You could clean all detachable parts under warm running water with some mild, odorless washing-up liquid and a soft sponge.

## Cleaning the bean container and outside of the machine



- 1 Clean the inside of the bean container and the outside of the machine with a damp cloth.
- 2 Dry the bean container and the outside of the machine with a dry cloth.

**Do not pour water into the bean container and prevent excessive drops of water from falling into the bean container.**

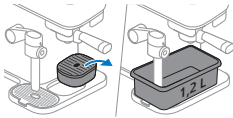


# Descaling

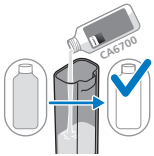
## Descaling procedure



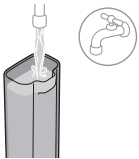
When the Calc led goes on while brewing or preparing milk froth, your machine needs to be descaled. Use Philips CA6700 descaler.



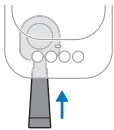
- 1 Remove the drip tray from the platform and put a bowl with a capacity of at least 1.2 liters under the coffee spout and the smart foam wand.



- 2 Pour a full bottle (250 ml) of Philips CA6700 liquid descaler into the water tank.



- 3 Fill up the water tank with fresh tap water.



- 4 Insert the portafilter. Make sure that there is no coffee puck in the portafilter.  
The portafilter needs to be inserted to be able to start descaling.



- 5 Press and hold the the Espresso and Lungo buttons together for 5 seconds until the Calc led is on. The Espresso button starts to blink slowly and the Lungo button and Calc led are on continuously.

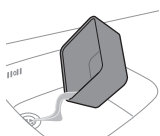
The Calc led will be on continuously while the descale process is active.



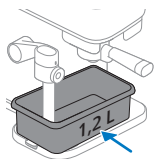
- 6** The machine dispenses the entire descaling solution at regular intervals through the coffee spout and smart foam wand alternately. This takes up to 30 minutes.



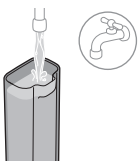
- 7** Wait until the Lungo button starts to blink fast and the Espresso button and Calc led are on continuously. The first phase of the descaling cycle has finished.



- 8** Remove and empty the container.



- 9** Place back the bowl under the coffee spout and the steam wand tube.



- 10** Rinse the water tank and fill it with fresh water.



- 11** Place it back in the machine and push it forward to "click" it into position.



- 12** Press the blinking fast Lungo button to start the flushing cycle.



- 13** While the machine is flushing, the Lungo button starts to blink slowly and the Espresso button and Calc led are on continuously. The machine will dispense the water through the coffee spout and smart foam wand alternately.

The water tank will be emptied without interruption.



- 14** Wait until the Lungo button starts to blink fast and the Espresso button and Calc led are on continuously. The first phase of the flushing cycle has finished.
- 15** Repeat steps 8 till 12.
- 16** When the flushing cycle is finished, all leds will switch off. The descaling procedure is finished.
- 17** Rinse the portafilter under the tap with some fresh water and some mild odorless detergent.
- 18** Clean the smart foam wand.

### What to do if the descaling procedure is interrupted

In case the descaling procedure is interrupted during the phase with descaler and water mixture: unplug the machine, plug it back in and restart the descaling procedure from step one.

In case the descaling procedure is interrupted during the flushing cycle: remove the water container, rinse it with water, refill the water container, place it back and rinse the machine a few times (see 'Rinsing the machine').

## Meaning of light signals

	Buttons	Signal and situation	Meaning
	Espresso or Lungo button	Blinking slowly after selecting	The selected drink button will blink slowly as soon as the drink button is selected and direct start is activated. The portafilter handle can be moved to the right to start grinding coffee.
	Espresso or Lungo button	Blinking fast while the machine stops brewing coffee	The water container is empty while brewing a coffee. Refill the water container and place it back into the machine. Make sure you push the water container into the housing of the machine until it "clicks" into place. Then press the blinking fast button to continue brewing.



Espresso or  
Lungo button

Blinking fast after refilling  
or placing back the water  
container

The water container is not in place or  
not placed back correctly. Make sure  
you push the water container into the  
housing of the machine until it "clicks"  
into place. Then press the blinking fast  
drink button to start or continue  
brewing.  
In case you fill the water container  
without removing the water container  
from the machine, press the blinking  
fast drink button to continue brewing  
coffee.



Espresso or  
Lungo button

Blinking fast after the  
portafilter is  
automatically moved  
back

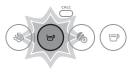
The portafilter is not in place. Push the  
portafilter into the machine into place.  
The button will start blinking slowly  
and the machine will start to brew  
coffee.



Espresso or  
Lungo button

Blinking fast during or  
after grinding  
Handle is still in the grind  
position.

The water container is removed from  
the machine during grinding or not  
well placed onto the machine. Make  
sure you place back the water  
container and push the water  
container into the housing of the  
machine until it "clicks" into place. The  
machine continues automatically the  
process.



Espresso or  
Lungo button

Blinking intermittently.

The programming mode is active.

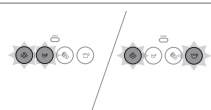
x			
	Buttons	Signal and situation	Meaning
	Foam button	Blinking slowly	The steam function is selected. The Foam button is blinking slowly during the heating-up and while steaming. Heating up takes about 30 seconds. After heating up, the machine starts frothing.
	Foam button	The Foam button is blinking 3 times and switches off after pressing it.	The smart foam wand is not well connected. Attach the smart foam wand onto the machine by pushing it upwards until it "clicks" into position. The milk froth has already reached the right temperature. Make sure to start milk frothing with cold milk.



Foam button

Blinking fast during steaming.

The water container is empty while steaming. Remove the water container, rinse and fill it with fresh water. Place it back and push it into the housing of the machine until it "clicks" into place. Press the blinking fast Foam button to continue the process.



Foam button and Espresso or Lungo button

Foam button and Espresso or Lungo button are blinking slowly at the same time.

The water container is removed while steaming or not well placed back. Place back the water container and push it into the housing of the machine until it "clicks" into place. Press the blinking fast Foam button to continue the process.

Both actions, frothing milk and brewing coffee are selected. If one action is finished, the other one will start automatically (see 'Frothing milk and brewing coffee in one go').

**Buttons****Signal and situation****Meaning**

Intensity boost button

The Intensity boost button is on continuously and the Espresso or Lungo button is blinking slowly.

The Intensity boost function is selected. The Intensity boost button can only be selected if one of the drink buttons has been activated first (see 'Intensity boost function').



Intensity boost button

Blinking slowly

Rinsing the machine is started and performed by the machine.









Intensity boost button

Blinking fast

The rinsing or brewing decaf with pre-ground coffee is started without the portafilter inserted. Insert the portafilter and the machine will start the process.

The water container is empty during rinsing or the water container is missing or not placed correctly. Refill the water container and place it back into the machine. Make sure you push the water container into the housing of the machine until it "clicks" into place. Then press the Intensity boost button that is blinking fast to start the rinsing.

**Buttons****Signal and situation****Meaning**

	Calc led	Calc led is on continuously after selecting drink or Foam button	The machine needs to be descaled (see 'Descaling procedure').
	Calc led, Espresso and Lungo buttons	The Calc led is on. The Espresso button is blinking slowly and the Lungo button is on continuously.	The machine is in the first phase of the descaling procedure (see 'Descaling procedure').
	Calc led, Espresso and Lungo buttons	The Calc led is on. The Espresso button is on continuously and the Lungo button is blinking slowly.	The machine is in the rinsing phase of the descaling procedure (see 'Descaling procedure').
	Calc led, Espresso and Lungo buttons	The Calc led is on. The Espresso button is blinking fast and the Lungo button is on continuously.	The portafilter is not inserted after the descaling process has started. Insert the portafilter and the machine starts the descaling procedure (see 'Descaling procedure').
			The water container is not inserted, or not placed correctly, while the descaling process has started. Place back the water container and push it into the housing of the machine until it "clicks" into place. Then press the Espresso button that is blinking fast to start the descaling procedure (see 'Descaling procedure').
	Calc led, Espresso and Lungo buttons	The Calc led is on. The Espresso button is on continuously and the Lungo button is blinking fast.	The water container is empty. Remove the water container, rinse and fill it with fresh water. Place it back and push it into the housing of the machine until it "clicks" into place. Press the blinking fast Lungo button to continue the next phase of the descaling procedure (see 'Descaling procedure').
Buttons		Signal and situation	Meaning
	All buttons	Blinking slowly	The machine is going back to starting position. During this period you cannot remove the portafilter. Once the leds have stopped blinking, you can remove the portafilter.

# Troubleshooting

Problem	Possible cause	Solution
The portafilter cannot be moved to the right to start grinding coffee.	The machine safety is activated to not brew a new coffee when there is still an old coffee puck inside the portafilter.	Remove the portafilter and empty it, rinse it if needed and place it back into the machine. Always make sure the portafilter is empty before starting a new brew.
The Espresso or Lungo button keeps blinking slowly and the machine does not start.	The portafilter is not moved to the right to start grinding. As soon as a drink button is selected, the button will start to blink slowly during the complete process.	After selecting the drink button, move the portafilter to the right to start grinding. Note: If you select the foam button first, the machine will froth milk first. After frothing, it will start grinding. It cannot brew coffee and froth milk at the same time.
After grinding, the Espresso or Lungo button keeps blinking fast and the portafilter does not move back automatically.	The water container is not well clicked into place.	Make sure you place back the water container and push it into the housing of the machine until it "clicks" into place.
The machine stops brewing coffee and the Espresso or Lungo button is blinking fast.	The water container is empty during brewing.	Refill the water container and place it back into the machine. Make sure you push the water container into the housing of the machine until it "clicks" into place. Press again the blinking fast button to finish brewing.
The portafilter cannot be removed or pulled from the machine.	Brewing is in progress.	As long as the brewing is in progress and the selected drink button is blinking slowly, the portafilter cannot be removed from the machine.
	The coffee brewing, rinsing, programming or descaling process has been interrupted.	If a process is interrupted, the machine needs some time to return to starting position. During this process, the portafilter cannot be removed until all leds are off.

Problem	Possible cause	Solution
The portafilter cannot be removed or pulled from the machine and all 4 leds keep blinking slowly for a longer time.	The machine is trying to return to a neutral position but is not able to do so.	Unplug the machine, wait 15 seconds and plug the machine back in. When plugged back in, the machine will try to solve the problem. If this does not resolve the issue, try to unplug the machine, wait 15 seconds, and plug the machine back in one more time. If this does not work, the machine needs service. Contact the Consumer Care Center in your country.
The coffee is not strong enough or too weak.	The Intensity boost button is not selected.	After selecting Espresso or Lungo button, you can select the Intensity boost button to turn this function on. The machine will grind some extra beans to increase the strength of the coffee.
	You are using the machine for the first time or after switching to a different bean type or roast. The dosing system needs to adjust.	Brew one or two more cups of coffee to optimize the dosing system.
	The coffee bean type or roast is not strong enough.	Try a different bean type or roast.
The machine is not brewing coffee and leaks around the portafilter.	The portafilter is overfilled and might not be emptied before a new brew starts.	Always empty the portafilter before you start a new brew. Make sure there is no ground coffee remaining in the portafilter before you start the grinding and brewing process.
There are a lot of coffee grounds falling out of the machine after grinding onto the drip tray or base plate.	The coffee puck from the previous brew was not ejected, causing the portafilter to be overfilled during grinding. The excess coffee grounds falls down as this does not fit the portafilter.	Remove the portafilter from the machine, empty and rinse it under the tap. Always make sure you start a new brew with an empty portafilter. Remove the coffee grounds that fall out with a dry cloth and try to brew a new coffee.
There are some coffee grounds falling out of the machine and onto the drip tray when the portafilter moves back from the grind position.	There are still some excess coffee grounds in the system due to an overfilled portafilter.	Empty and rinse the portafilter under the tap and dry it. Always make sure that you start a new brew with an empty portafilter.



Problem	Possible cause	Solution
The coffee pucks are watery.	You are using the machine for the first time or after switching to a different bean type or roast.	The dosing system needs to adjust. Brew one or two more cups of coffee to optimize the dosing system.
There is some clear water under the machine.	The water container is overfilled when it is placed back into the machine.	When placing a full water container, make sure no water is spilled.
The portafilter is leaking some drops of coffee or water.	Some coffee or water stays behind in the portafilter after emptying or cleaning it.	Some dripping might appear. To reduce the dripping after rinsing, shake off the excess water and dry the portafilter.
The cup does not fit under the coffee spout.	The drip tray is not yet removed to create extra space.	Remove the drip tray to create extra space and larger cups can be placed.
The volume of the coffee is not large enough.	The standard volumes is not yet adjusted.	The standard volumes of the coffee can be adjusted and stored (see 'Programming drink volumes').
The machine cannot finish the drink during brewing.	The water container is empty during brewing coffee.	Refill the water container and place it back into the machine. Make sure you push the water container into the housing of the machine until it "clicks" into place. Press the blinking fast button to continue brewing.

## Troubleshooting milk froth

Problem	Possible cause	Solution
The milk is not frothed or achieves poor froth.	The smart foam wand is polluted.	Remove the smart foam wand and make sure it is well cleaned (see 'Cleaning the smart foam wand after every use').
	The metal wand tube is not fully attached to the top wand part of the smart foam wand.	Make sure the metal wand tube is fully attached to the end of the top wand part.
	The foam selector knob is not well dried after rinsing or cleaning.	Remove the foam selector knob from the smart foam wand and make sure it is dry and clean.

Problem	Possible cause	Solution
	The milk is not cold.	Make sure the added milk is cold directly from the fridge. Warmer milk will not give the best frothing result.
	The milk type might not give the best milk froth result.	We recommend you to use one of the following milk types: semi-skimmed cow's milk, full-fat cow's milk or plant-based milk. Note: We recommend checking the plant-based milk you would like to use to see if they are specially formulated to create milk froth for your cappuccinos, lattes and other milk-based beverages. You may find your favorite brand to have a "Barista" or "Professional" edition.
	Too much or too less milk is poured into the jug.	Do not overfill the jug over the max level with milk. Make sure the milk is between the min and max level.
	When you froth milk in a glass or a cup, the tip of the metal wand tube is not inserted into the milk.	Make sure the tip of the metal wand tube is inserted into the milk.
	When you froth milk in a glass or a cup, there is too much milk in the glass or the cup.	The milk volume should not be higher than half the length of the metal wand tube.

## Recipes

Recipe	Foam setting	Cup/Glass	Espresso*	Milk amount in jug	Order beverage in cup
Cappuccino	Micro foam	Cup	1 shot	Min. Level - 100 ml	Froth micro foam, brew espresso. Pour the micro foam onto the brewed espresso in the cappuccino cup.
Café latte	Hot milk	Cup/ glass	1 shot	130 ml	Froth hot milk, brew espresso. Pour the hot milk onto the brewed espresso in the glass cup.

Latte Macchiato	Thick foam	Tall glass	1 shot	150 ml	Froth thick foam, brew espresso. Pour first the milk froth into a tall glass, then brew an espresso on top.
Flat white	Micro foam	Cup	2 shots	110 ml	Froth micro foam, brew espresso. Brew first an espresso into the cup, then another then add milk froth on top.

2025 © Versuni Holding B.V.

PHILIPS and the Philips Shield Emblem are registered trademarks of Koninklijke Philips N.V. and are used under license.

This product has been manufactured by and is sold under the responsibility of Versuni Holding B.V., and Versuni Holding B.V. is the warrantor in relation to this product.

xxxx.yyy.zzzz.a (11/2025)



100%   
www.home.id